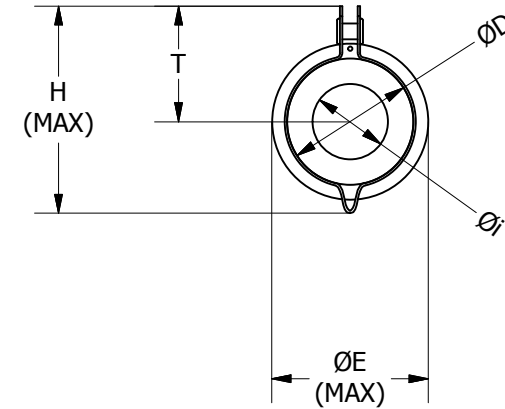
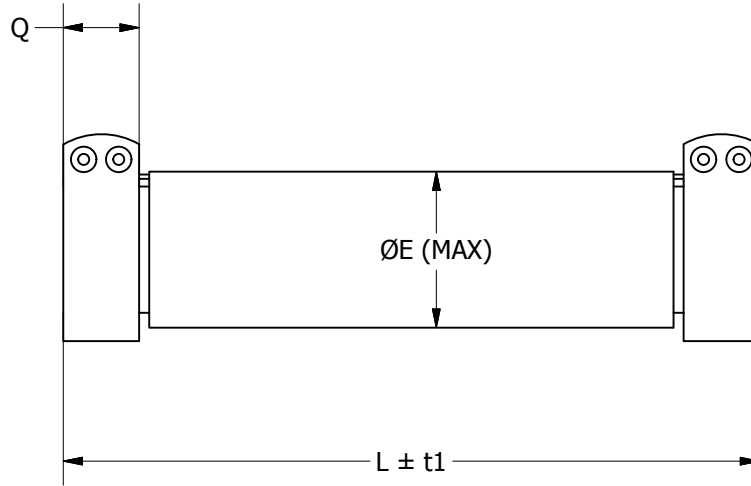


STANDARD ELECTRICAL SPECIFICATIONS					TECHNICAL SPECIFICATIONS		
MODEL	POWER RATING [W]	RESISTANCE RANGE [Ω]	TOLERANCE	U.lim [V]	PARAMETER	UNIT	RESISTOR CHARACTERISTICS
RS-HP 95 type TF	110	3 ÷ 75.000	± 5%	1.400	Temperature Coefficient	ppm / °C	75
RS-HP 160 type TF	180	3,9 ÷ 100.000	± 5%	1.900	Operating Temperature Range	°C	-55 ÷ +450
RS-HP 280 type TF	320	6,8 ÷ 180.000	± 5%	3.000			

**TECHNICAL DESCRIPTION:** Wire wound resistor coated with vitreous enamel.  
 Core: Steatite ceramics.  
 Wire: NiCr alloy.  
 Collars: riveted.



General Tolerances ISO 2768-1 Linear Dimensions mm								
from	0,5	3	6	30	120	400	1000	2000
to	3	6	30	120	400	1000	2000	4000
f	±0.05	±0.05	±0.1	±0.15	±0.2	±0.3	±0.5	
m	±0.1	±0.1	±0.2	±0.3	±0.5	±0.8	±1.2	±2
c	±0.2	±0.3	±0.5	±0.8	±1.2	±2	±3	±4
v	±0.5	±1	±1.5	±2.5	±4	±6	±8	

General Tolerances DIN 40680-1 (general dimension) mm							
Da	A	Tolleranza g	Tolleranza m	Da	A	Tolleranza g	Tolleranza m
	4	±0.4	±0.15	100	110	±5.0	±2.00
4	6	±0.6	±0.20	110	125	±5.5	±2.20
6	8	±0.7	±0.25	125	140	±6.0	±2.50
8	10	±0.8	±0.30	140	155	±6.5	±2.80
10	13	±0.9	±0.35	155	170	±7.0	±3.00
13	16	±1.0	±0.40	170	185	±7.5	±3.40
16	20	±1.2	±0.45	185	200	±8.0	±3.80
20	25	±1.2	±0.50	200	250	±9.0	±4.20
25	30	±1.5	±0.55	250	300	±10.0	±4.60
30	35	±2.0	±0.60	300	350	±11.0	±5.00
35	40	±2.0	±0.65	350	400	±12.0	±5.50
40	45	±2.0	±0.70	400	450	±13.0	±6.10
45	50	±2.5	±0.80	450	500	±14.0	±6.80
50	55	±2.5	±0.90	500	600	±15.0	±7.60
55	60	±2.5	±1.00	600	700	±16.0	±8.30
60	70	±3.0	±1.20	700	800	±17.5	±9.00
70	80	±3.5	±1.40	800	900	±19.0	±9.50
80	90	±4.0	±1.60	900	1000	±20.0	±10.00
90	100	±4.5	±1.80	1000		±0.02'd	±0.01'd

Unless where otherwise specified, dimensions in this drawing are expressed in mm  
**Applicable standard for ceramic parts**  
 Ceramic components for electrical use - tolerances according to DIN 40680-1 (general dimension) and DIN 40680-2 (shape) in particular: DIN 40680-1 (general dimension), DIN 40680-2-B-m (straightness), DIN 40680-2-C-m (flatness), DIN 40680-2-D-m (cylinder).  
 Ceramic material must be made according to IEC 60672-3:1997

REVISIONI/REVISIONS

REV	DATA/DATE	DESCRIZIONE/DESCRIPTION	DISEGNATO/DRAWN	CONTROLLATO/CHECKED
00	29/05/2018		M. Di Pinto	A. Campagnoni

Dimensional table RS-HP type TF								
Resistor	L	t1	Q	H (MAX)	ØD	Øi	ØE (MAX)	T
RS-HP 95 type TF	138	2	15	41	25	15	31	23
RS-HP 160 type TF	168	2	15	41	25	15	31	23
RS-HP 280 type TF	250	2,5	20	46	30	18	36	25

<b>FAIRFIELD</b>	FAIRFIELD SRL VIA ECHING, 12 TREZZANO S/N (MI) 20090 ITALY TEL. +39 02 48407171 FAX +39 02 48407157 www.fairfield.com - info@fairfield.com	
	This drawing is a Fairfield's exclusive property. Reproduction and spread, also partial, of this drawing are forbidden without written authorization from Fairfield	
PROGETTO/PROJECT RS-HP type TF		
TITOLO/TITLE RS-HP type TF Datasheet		
DISEGNO NR./DRAWING NR. DT.RS-HP type TF.DS	CODICE ARTICOLI/ITEM CODE RS-HP type TF	MATERIALE/MATERIAL
DISEGNATO/DRAWN M. Di Pinto	CONTROLLATO/CHECKED A. Campagnoni	DATA/DATE 29/05/2018
	FOGLIO/SHEET 1 of 1	TOLLERANZA/TOLERANCE Ceramic parts: g Linear dimensions: c